

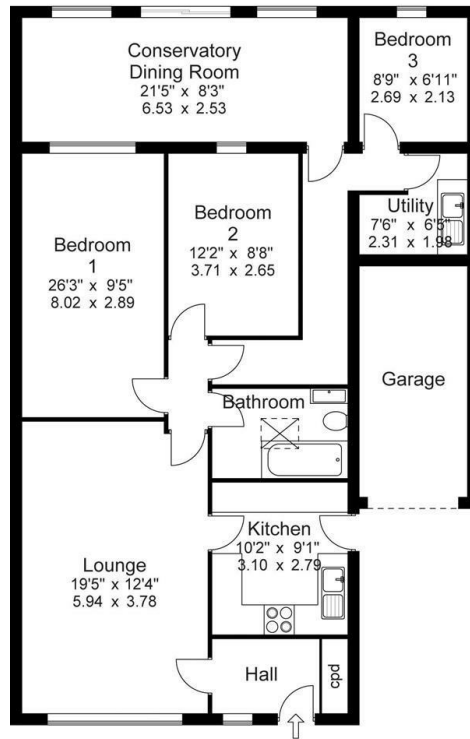


58 Central Park, Halifax, West Yorkshire, HX1 2BT

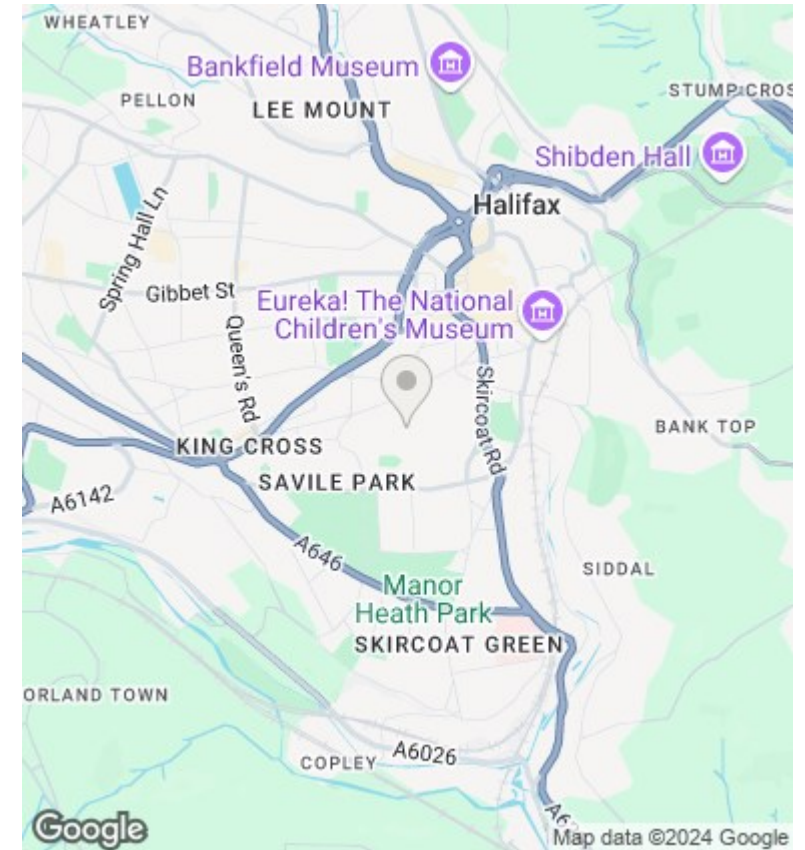
Offers In Excess Of £300,000

- : Extended Detached Bungalow
- : Garage
- : Spacious Lounge
- : Realistically Priced
- : Highly Desirable Residential Location
- : large Conservatory / Sun Room
- : Easy Access to Halifax Town Centre
- : 3 Good Sized Bedrooms
- : Modern Kitchen
- : Viewing Essential

Approx Gross Floor Area = 1133 Sq. Feet
(Excluding Garage) = 105.03 Sq. Metres



For illustrative purposes only. Not to scale.



Directions

Viewings

Viewings by arrangement only. Call 01422 349222 to make an appointment.

Council Tax Band

D

EPC Rating:

Energy Efficiency Rating		
	Current	Potential
Very energy efficient - lower running costs		
(92 plus) A		
(81-91) B		
(69-80) C		
(55-68) D		
(39-54) E		
(21-38) F		
(1-20) G		
Not energy efficient - higher running costs		
England & Wales	EU Directive 2002/91/EC	